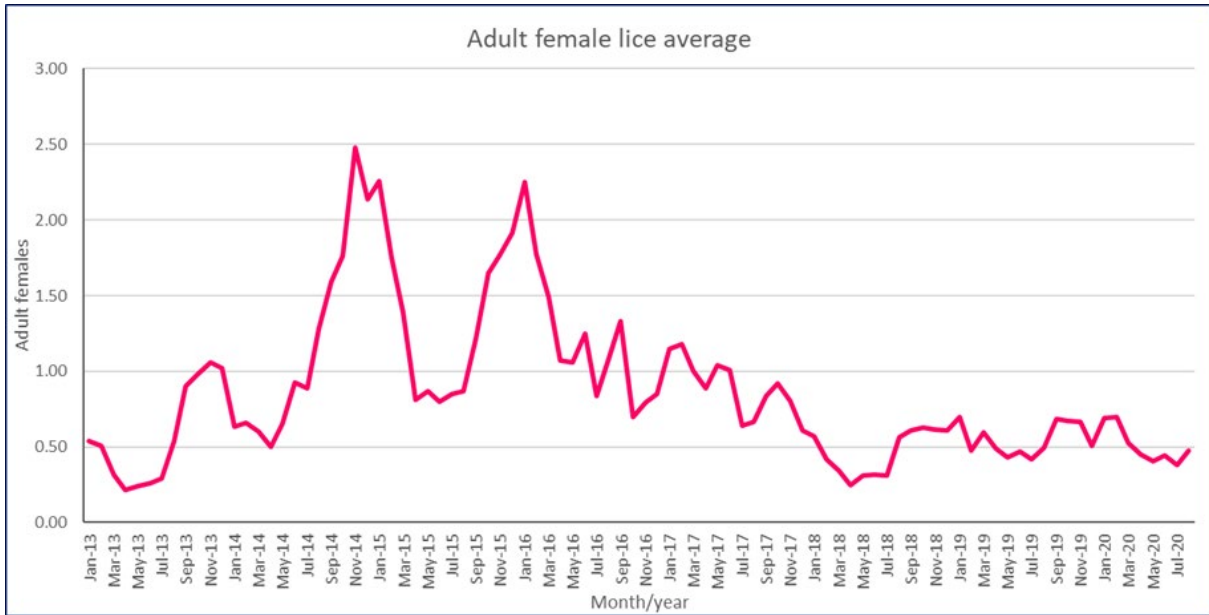


August 2020 lice averages

The overall industry lice average for August 2020 was **0.47** adult females.

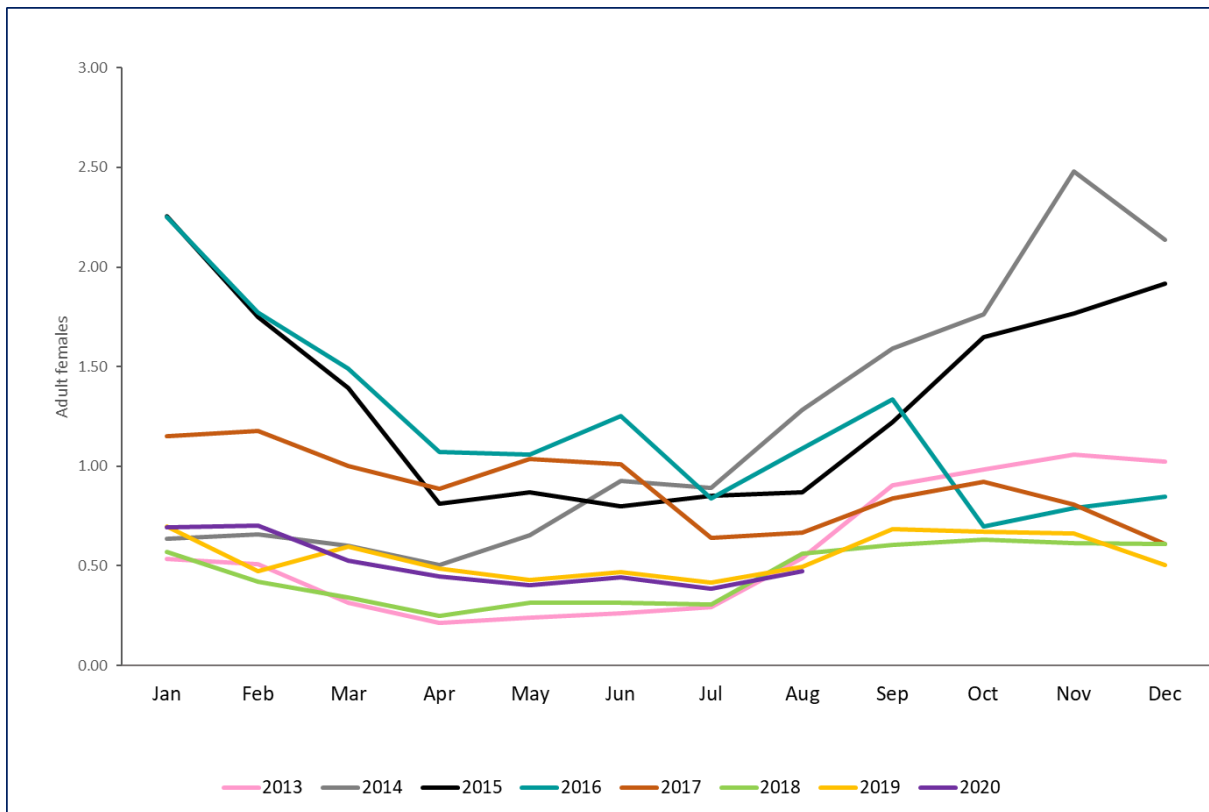
This has been plotted on trend graphs below:

Continuous data since 2013



Each year overlaid on one another

The most recent data, covering 2020, is in purple.



Summary notes:

- The industry lice average for August 2020 increased slightly when compared to July 2020 (0.47 v. 0.38).

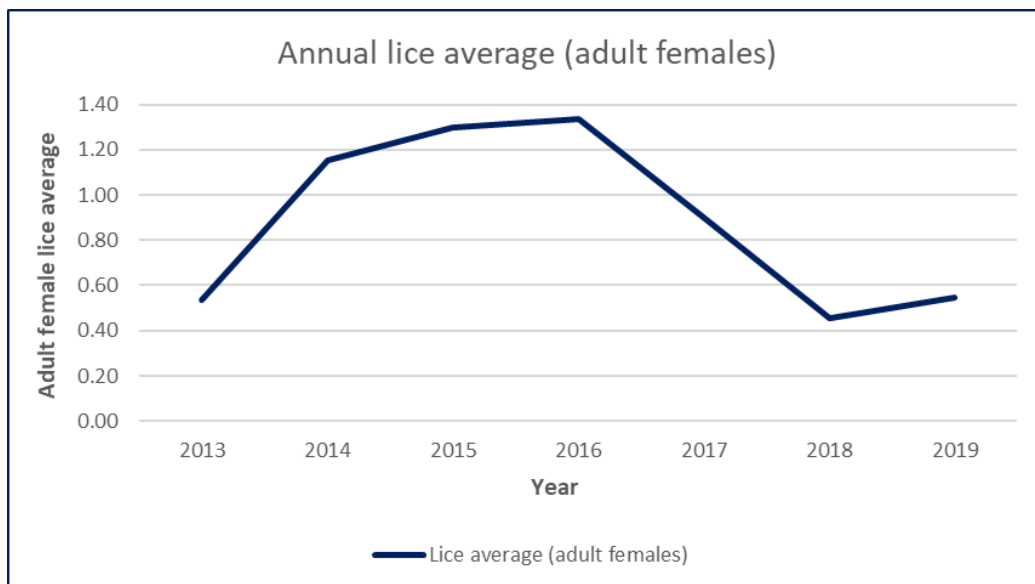
Average monthly lice data (adult females), covering 2013 to date, is shown in the table below. This is the data presented in the graphs above.

Month	Year							
	2013	2014	2015	2016	2017	2018	2019	2020
January	0.54	0.64	2.26	2.25	1.15	0.57	0.70	0.69
February	0.51	0.66	1.75	1.77	1.18	0.42	0.47	0.70
March	0.31	0.60	1.39	1.49	1.00	0.34	0.60	0.52
April	0.21	0.50	0.81	1.07	0.89	0.25	0.49	0.45
May	0.24	0.66	0.87	1.06	1.04	0.31	0.43	0.40
June	0.26	0.93	0.80	1.25	1.01	0.32	0.47	0.44
July	0.29	0.89	0.85	0.84	0.64	0.31	0.42	0.38
August	0.54	1.28	0.87	1.09	0.67	0.56	0.50	0.47
September	0.90	1.59	1.22	1.33	0.84	0.61	0.69	
October	0.98	1.76	1.65	0.70	0.92	0.63	0.67	
November	1.06	2.48	1.77	0.79	0.81	0.62	0.66	
December	1.02	2.14	1.92	0.85	0.61	0.61	0.50	

Annual lice averages

The annual lice average (adult females) for each year, from 2013 to date, is shown in the graph and table below.

2018 had the lowest annual lice average since detailed records were published, in 2013.



Year	Lice average (adult females)
2013	0.54
2014	1.15
2015	1.30
2016	1.33
2017	0.90
2018	0.46
2019	0.54